



Corporate Social Responsibility 2008

- for the forests and for the future

CSR Report 2008

Corporate Social Responsibility (CSR) in DLH is about acting responsibly in our business activities. It is about ensuring the forests and nature we depend on. It is about securing the rights and well-being of every employee and being a responsible member of the local communities we engage in. Last but not least it is about promoting the benefits of sustainable forestry to our customers, suppliers and other stakeholders.

Introduction to the CSR report

This CSR report describes our CSR focus areas and provides an overview of the environmental and social initiatives launched in 2008. It also outlines the results and accomplishments we have achieved.

The CSR report serves as an important communication tool for the DLH Group and is part of our commitment to openness and accountability. It is also a supplement to the DLH Group's annual financial statements that provides a detailed insight into the financial aspects.

Please explore this publication to learn more about the extent of DLH's CSR activities over the last year, including the doubling of our area of FSC™-certified tropical forest in Congo-Brazzaville, the status of our current and new projects with suppliers and the launch of a revised environment policy.

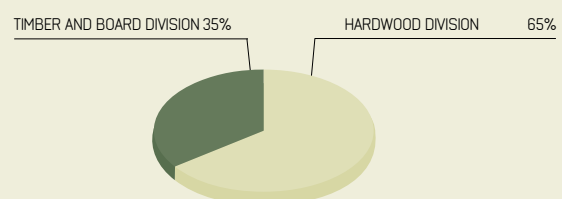
Also read about improvements in health and safety for our employees in Malaysia, Brazil and Congo-Brazzaville, how we engage actively in the fight against malaria and HIV/AIDS, and the establishment of the first ever indigenous peoples' language radio station in the Congo Basin.

One of the world's largest timber wholesalers

The DLH Group

- Group revenue of DKK 5.0 billion in 2008
- One of the largest producers of sustainable tropical hardwood in Africa
- 87% of revenue generated outside Denmark
- Sales and procurement offices, warehouses and processing plants in 33 countries across five continents
- Approximately 3,700 employees
- Listed on the NASDAQ OMX Copenhagen stock exchange

Business activities – breakdown of revenue 2008



Message from the CEO

2008 has been a historic year marking the 100-year anniversary of the DLH Group. The anniversary was not only an opportunity to look back in history and recall what brought the Group to where we are today, but also an opportunity to renew our brand and logo to reflect the values we stand for and the way we do business today.

2008 was a year of great achievements in our social and environmental activities. Through a wide range of events and activities, we have manifested our position as a responsible company.

The doubling of our area of FSC-certified tropical rainforest in Africa is a clear demonstration of how we translate our values and words into concrete actions. With now 750,000 hectares of certified African tropical forest, we will maintain our position as one of the world's leading suppliers of certified tropical hardwoods.

At the end of 2008, we launched a revised environment policy. New goals and targets set our direction for the years to come and ensure continuous improvement of our environmental performance. We are currently developing new policies for the social and human rights aspects of our business. Together with the environment policy, this will constitute our Corporate Social Responsibility (CSR) policy and guide how we act as a responsible company.

Climate is high on the political agenda and we have for the first time published our position on this matter in our revised environment policy. In 2009 Copenhagen will be hosting the United Nations Climate Change Conference. We hope that this event will be a success and that forests and wood products will be recognised for their great potential in catching and storing carbon dioxide and thus reducing the effects of global warming. We are optimistic that a positive outcome will be reached in Copenhagen.

Among the tangible results of our anniversary activities are the 10,000 mosquito nets that have been sent to Congo-Brazzaville, where malaria poses a constant threat to the lives and well-being of our colleagues and their families. This was possible thanks to the many and generous contributions by DLH employees, customers, suppliers and anniversary guests.

However, 2008 was not only about celebrations and achievements. The current global financial turmoil has also affected DLH. The lower demand in many of our markets has put a strain on our business activities. We are working hard to adapt the organisation to face the challenges of this situation. Strengthening our position in all links of our value chain and with a continued focus on CSR, we are confident that DLH will get through this crisis and come out stronger on the other side – while remaining at the forefront in global CSR trends.

Jørgen Møller-Rasmussen, CEO



A handwritten signature in black ink, appearing to read 'Jørgen Møller-Rasmussen'.

Jørgen Møller-Rasmussen,
President, CEO



DLH's house of values
Read more on www.dlh-group.com

Environment

Our business activities are based on wood material supplies from the world's forests, so we have a vested interest in engaging actively in conserving and protecting the forests. Regardless of the challenges we face, DLH has decided to integrate a holistic approach to responsibility in all our business operations – for the benefit of our business and for the benefit of all our stakeholders.

New environment policy

At the end of 2008, DLH launched a revised environment policy to reflect where we are today in our goal of becoming an environmentally responsible company.

Based on evaluations of the progress and effects of our previous policy, we have revised our focus areas, goals and targets to match the increasing global focus on environmental sustainability and climate change. To ensure that we are in line with the expectations of DLH employees as well as our stakeholders, the policy has been reviewed both internally and externally.

A dynamic policy

Reflecting our aim for continuous improvement and ensuring that we keep abreast of the latest global environmental trends, the exact scope and focus of our environmental activities and strategies are revised on a regular basis. During 2009, we plan to refine our environment policy in close cooperation with DLH sales and procurement offices to set specific and detailed goals for all DLH's business operations.

Since 1991, when our first environment policy was implemented, DLH has increasingly demonstrated environmental responsibility. Today, the environment policy has become an integrated part of daily business operations. Thanks to efforts and enthusiasm of the many DLH employees who work tirelessly to meet our environmental goals, we are today among the leading suppliers of sustainable tropical hardwoods.

Please visit www.dlh-group.com to download the full version of our environment policy including our goals and progress.

Caring about the climate

Deforestation is recognised as a major contributor to the release of carbon dioxide in the atmosphere causing negative climate effects. On the other hand, activities aimed at retaining forests could be the single biggest contributor to slowing down the current release of carbon dioxide into the atmosphere.

Sustainably produced timber is considered 'carbon negative' due to the unique ability of wood to both reduce carbon dioxide emissions and to remove and store carbon dioxide from the atmosphere and can therefore play a vital role in mitigating climate change.

In addition, sustainable forest management helps preserve the natural biodiversity of forests and maintains the important ecosystem services provided by the forests.

With DLH's revised environment policy, we have enhanced our environmental commitment to include:

- Maintaining all our own forests as carbon sinks by applying principles for long term sustainable forest management
- Facilitating, promoting and if possible participating in the establishment of carbon sequestration projects through the establishment of timber plantations on previously unforested or degraded forest land
- Work to convert waste-wood into alternative sources of energy



In 2009, Copenhagen is hosting the COP 15 United Nations Climate Change Conference (15th Conference of the Parties). We will follow this event closely and hope that the world's forests and wood products will be recognised for their great potential in mitigating the effects of climate change due to their ability to capture and store carbon dioxide.

We believe such a conclusion will further evidence the importance of conserving the world's forests and create additional incentives for governments and forest managers and forest communities all over the world to move toward sustainable forestry.

Our forests

Congo-Brazzaville

This year a significant milestone was reached when DLH more than doubled the area of FSC-certified natural tropical forest in our forest concessions in Congo-Brazzaville. This means that DLH has now obtained FSC certification for half of the forest concessions that are managed by DLH subsidiary Congolaise Industrielle des Bois (CIB). This is one of the largest contiguous FSC-certified natural forest in Africa to date.

The preparations for FSC certification of the next area are in progress. Our Loundoungou-Toukoulaka concession underwent pre-assessment by the certification body Smartwood in November 2008 and the aim is to complete a main assessment before the end of the year. Once this concession is FSC-certified, DLH is one step closer to the aim of having the full area of 1.3 million hectares certified.

Gabon

In April 2008, DLH acquired the Gabonese company Compagnie Forestière des Abeilles (CFA), thus increasing the total forest area managed by DLH in Gabon to approximately 330.000 hectares. Preparations for obtaining FSC certification are underway. The first version of a sustainable forest management



plan was completed at the end of 2008 this time benefitting from the experience obtained in CIB, Congo-Brazzaville.

DLH is also helping one of its smaller suppliers develop a management plan for sustainable forest management under a project facilitated by the French development agency (AFD). Covering an area of 54,000 hectares, this project makes the total area progressing toward sustainable forest management under DLH guidance in Gabon approximately 385.000 hectares.

Congo-Brazzaville is covered by approximately 22 million hectares of tropical dense forests, of which 17% is protected as reserves and national parks.

With DLH's certification of 750.000 hectares, the long-term conservation of an additional 4% of Congo-Brazzaville's forest areas is guaranteed under FSC certification. Once the certification of DLH's forest concessions has been completed it will cover nearly 8% of Congo-Brazzaville's total forested area.



The benefits of certification are multiple. FSC social criteria ensure that the rights of the local and indigenous communities are respected. Certification also ensures the rights of the workers involved in production and forest operations are safeguarded.

DLH forest areas in the Congo Basin support a diversity of species, including threatened mammals such as elephants, gorillas, and chimpanzees. The application of FSC principles ensures that the forest will continue to sustain the biodiversity that not only people but also animals depend on.

Our suppliers

Good Supplier Program (GSP)

DLH wants to know where all the timber and wood products we buy come from. We use our Good Supplier Program (GSP) to collect and evaluate information on the origin of timber and wood products directly from our suppliers. In 2008, 92% of our purchases from GSP countries (all tropical regions, Russia, Ukraine and Belarus) were covered by the GSP. In 2009 we will continue our commitment and work towards our ultimate goal of 100% known origin in 2009.

Read more about our Good Supplier Program on www.dlh-group.com

Results of GSP in 2008:

In 2008, we managed to increase our percentage of timber and wood products with known origin from 80% to 87%. A substantial achievement, but yet not completely satisfactory.

By the end of 2007, we had revised our goal for 2008 to 90% known origin. Despite a concerted effort from DLH's procure-

ment offices the challenges turned out to be more difficult than first expected. We will maintain the target of 90% known origin for 2009.

DLH continues to expand its business through acquisitions. With each new acquisition comes a range of new suppliers and new businesses, which all need to be integrated in the GSP. During this integration period, they often figure 'negatively' in our statistics. This explains part of the gap between goal and performance.

GSP: The backbone of DLH's environment policy

GSP continues to be an integrated part of our procurement strategy, serving as an effective 'early warning' tool which allows us to be proactive and take action if we encounter problematic situations.

Taking environmental responsibility to the next level

Our Good Supplier Program is the first basic step to obtaining 'known origin' when we work with our suppliers. Taking the commitment to the next level, we work in a stepwise approach to assisting our suppliers in obtaining third-party verification of origin, legality and ultimately full certification of sustainability.

Levels of verification and certification:

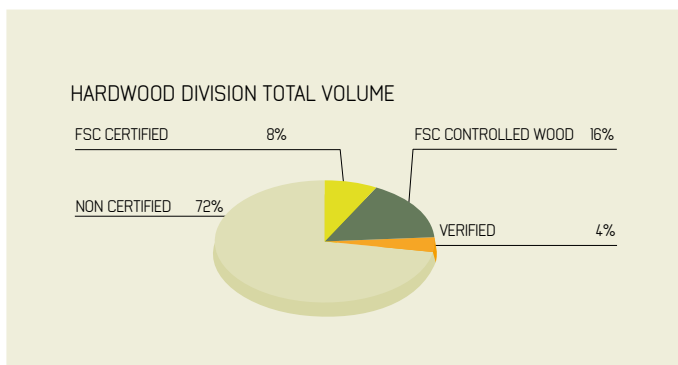
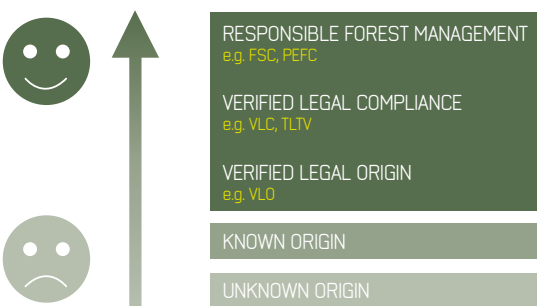
The figure illustrates the different levels of verification and

certification from 'Verified Legal Origin' (VLO), where the origin of the timber and legal right to harvest are verified by an independent third party, to full certification for sustainable forestry, which involves a wide range of environmental, social and economic requirements.

Each level of verification and certification is supported by a range of different standards that describe the applicable requirements for each level of the verification and certification. The compliance with the requirement is assessed by an independent third party, which also issues documentation for its assessments.

In 2008, 28% of the tropical hardwoods purchased by DLH were covered by third party verification.

For a detailed description of the requirements applying to each level please visit our website at www.dlh-group.com and download the 'DLH Group Guide to Certification & Verification'





Certification Trends

Certified softwood and boards for European markets

In 2008, DLH experienced an increased demand for certified softwood in the European markets, and DLH Timber and Board Division sent the first shipments of FSC-certified softwood from Russia to destinations in Europe.

Demand is still limited, but the combination of growing consumer awareness and European public procurement policies has created strong drivers for further increases in the demand for both certified softwood and board products.

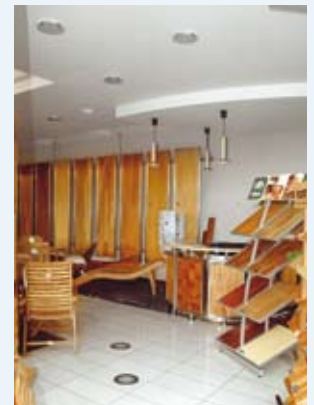
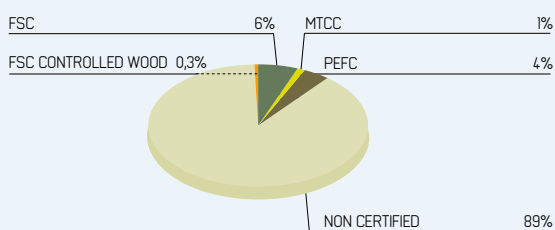
For this reason, we plan to progressively increase our promotion of certified softwoods and boards while also working to expand our certified product portfolio to meet future demands.

Green trend in Poland

DLH Poland was among the first timber wholesalers to import FSC-certified tropical timber and wood products into the Polish market. With sustainable wood products in their portfolio, DLH Poland has increased its competitive advantage from previously only competing on price and quality to now offering the additional benefit of green labelling.

Like many other countries across the world Poland has experienced a growing demand for 'green' products. DLH Poland reports increasing enquiries for green furniture, doors and window frames.

TIMBER AND BOARD DIVISION TOTAL VOLUME



Working with suppliers: The global scope

DLH works actively with suppliers all over the world to assist them in obtaining different levels of verification of legality and certification. This year we have seen a positive trend in all of our major sourcing regions, where suppliers are showing an increasing interest in such projects. Varying from region to region and supplier to supplier, DLH's assistance consists of both financial support and the transfer of knowhow and experience. Read more about the global scope of our work with suppliers below.



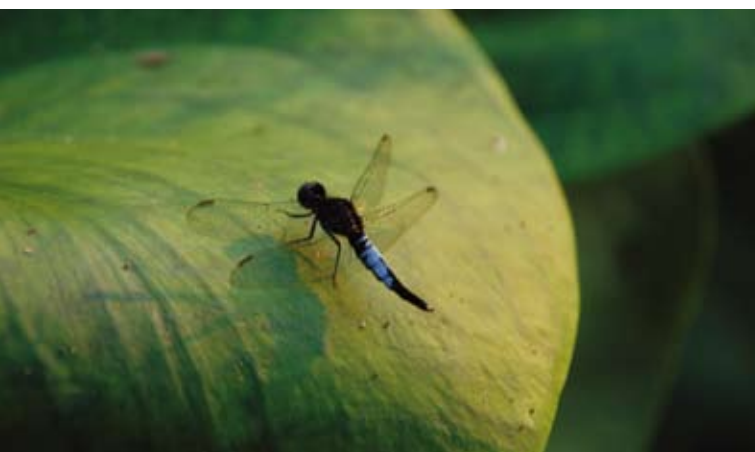
South America

This year DLH involved itself in VLO projects with three different suppliers in Brazil. Implementation is governed by the organisation Tropical Forest Trust and is partly financed by the EU under the Timber Trade Action Plan (TTAP) programme.

Africa

In Africa, we see a clear trend among suppliers to engage in projects aiming at third party verification of legality and certification for sustainability. DLH actively supports suppliers from our primary African sourcing countries with both financial assistance and the transfer of important knowhow and experience.

- In the Ivory Coast, DLH is working together with the largest suppliers to obtain the first third-party verification of legal compliance in the country.
- DLH assists suppliers in Gabon with obtaining verification for legal compliance.
- DLH has begun supplying the European market with FSC-certified products from Gabon and Cameroun following the certification of some of our suppliers in 2008.



South East Asia

The interest in engaging in projects aiming at obtaining third party verification of legal origin is generally growing among our suppliers in our primary sourcing areas in South East Asia. The good results of our first projects in the Malaysian province of Sabah on Borneo in 2006 have demonstrated a range of clear commercial and competitive advantages of investing time and resources in engaging in such projects.

- DLH is the only company in the Malaysian province of Sabah with VLO status and in 2008 DLH received the first ever VLO certificate in the Philippines.
- Today, all of our major suppliers in the Malaysian province of Sabah are enrolled in our VLO group management system.
- DLH has been working to develop the Vietnamese market for certified timber and wood products for several years, and DLH is among the leading suppliers of FSC-controlled wood to the garden furniture industry in Vietnam.

Please read more about these projects and others on our website www.dlh-group.com



INNOVATIVE PROJECTS IN THE IVORY COAST

With financial assistance from DLH and International Tropical Timber Organization (ITTO), two DLH suppliers participated in a pioneering pilot project in the Ivory Coast.

Using barcode technology to track timber from its origin as a standing tree in the forest to the wood processing plants and to the point of export, the project has laid a foundation for a nationwide timber traceability system in the Ivory Coast.

FSC PROJECT IN MOZAMBIQUE

In 2008, DLH entered a partnership with a Mozambican supplier under Danida's Business-to-Business Programme (B2B).

The objectives of the partnership are to bring the supplier's forest management and sawmill operations in line with FSC principles and to upgrade its production of wood products to meet the quality requirements of European markets.

In this way, the partnership not only lays the foundation for long-term cooperation between DLH and the Mozambican supplier: it also ensures important capacity building of local production facilities.

In addition, the project addresses a wide range of core CSR issues such as:

- HIV/AIDS and malaria awareness campaigns
- Improvement of sanitary conditions at the sawmill
- Improvement of living conditions for employees
- Capacity building



Social responsibility

The scope of our social responsibility includes providing safe and healthy workplaces for all employees and fully respecting their basic human rights. We aim to make a positive contribution to the communities we are active in through partnerships and cooperation with local and international organisations.



Social responsibility

Sustainable forest management extends beyond preserving the environment and biodiversity: in our own forest areas, sustainability includes protecting the human and social rights of the indigenous and local population, providing access to health services, infrastructure, schools, housing, access to communication and information, and other essential services.

Working with our suppliers to obtain certification it is not just for the benefit of the world's forests. Social criteria in various certification standards help to secure both the rights of employees and the rights of the people and local communities in which the operations take place. Thus we believe, that sustainable forest management combined with trade and dialogue are essential tools in promoting and protecting social and human rights within our business sphere.

DLH is present in countries with significant differences in performance in social and human rights issues and as a result the challenges are many. We recognise the fact that the implementation of social standards is a gradual process.

Social and Human Rights Policy underway

In 2008 we began developing a new corporate social and human rights policy, which will be published sometime in 2009. The policy will describe our future direction and main focus areas in social and human rights issues. Together with our environment policy, it will constitute DLH's CSR policy and set out guidelines to ensure that we act as a responsible company.

We continue our general monitoring of the human rights situation in those of our supply countries in which safeguarding human rights could be problematic. We continue to be active members of Amnesty International Business Forum.

Working safely

DLH strives to provide a safe and healthy workplace and works actively to prevent accidents and work-related illnesses. In 2008, DLH production units continued their work to ensure good and safe working environments for their employees.



Besides their daily work with health and safety, DLH Brazil designates one week each year for intensive training of all employees. The theme for 2008 was 'Become Aware - To avoid Accidents'. A combination of external guest speakers, performances by employees and actors, and the participation of DLH Brazil directors and committee members sent the clear message that everyone must take responsibility for a safe work environment.

DLH Malaysia continues its efforts to improve health and safety, and most importantly to create a culture of health and safety, so that all employees understand and appreciate the need for self-protection and individual awareness when working in the production.

In CIB in Congo-Brazzaville workshops on safety and awareness building were held for both CIB employees and CIB contractors. For two weeks 1,536 people attended the workshops, which were conducted by the independent consultant TERA.

DLH's production facilities in Gabon have recently undergone renovations and the sawmill is now ready for independent auditing under the ISO 14001 Environmental Management System (EMS). The EMS system includes a wide range of health and safety measures.

| | CIB | Malaysia | Brazil | Gabon |
|---|------------|----------|--------|-----------------------------------|
| Compulsory safety equipment | ✓ | ✓ | ✓ | ✓ |
| Regular health and safety training | ✓ | ✓ | ✓ | ✓ |
| ISO-certified (14001) | In process | | | In process - preaudit carried out |
| First aid available | ✓ | ✓ | ✓ | ✓ |
| Training in first aid and fire fighting | ✓ | ✓ | ✓ | ✓ |



Health projects

We work proactively to create awareness on health issues among employees and to prevent work-related diseases in the workplace. In addition to the general health benefits offered to employees, we have launched two health projects that deal with two of the major threats to the general health among our employees in Congo-Brazzaville.

DLH action against malaria

In connection with DLH's 100-year anniversary, a fundraising campaign for the purchase of mosquito nets for distribution amongst employees and their families in Congo-Brazzaville was launched, with a pledge from DLH to double all incoming contributions. Thanks to the generous contributions of DLH employees, customers and clients, we exceeded our initial goal of 5,000 mosquito nets and ended up sending a total of 10,000 mosquito nets to CIB in Congo-Brazzaville. The nets were distributed at the end of January 2009.

As part of this project, DLH has entered a three-year agreement with the Danish manufacturer of the mosquito nets Vestergaard Frandsen to ensure follow-up and monitoring of the effects and usage of the nets. This data is not just important to our continued effort to combat malaria at CIB's concessions, but also for Vestergaard Frandsen's general research on malaria.

As a consequence, the project will benefit those who receive the nets while also contributing important data to the global fight against malaria - an illness that claims up to three millions lives each year.

DLH action against HIV/AIDS

The fight against HIV/AIDS continues in the forest areas managed by CIB in Congo-Brazzaville. In 2008, DLH and CIB entered a project partnership with the Dutch HIV/AIDS specialist PharmAccess aimed at mitigating the impact of HIV/AIDS and preventing further spreading of the disease. The project

receives financial support under Danida's Public Private Partnership Programme and will start in February 2009.

Social responsibility in the forest

Voices in the forest

DLH subsidiary CIB in Congo Brazzaville is currently busy completing construction of the community radio station 'Biso na Biso', which means 'Among Us'. The community radio is part of the wide range of innovative solutions developed in partnership by CIB and the organisation Tropical Forest Trust to meet FSC social criteria for sustainable forest management.

For the first time in history, the Pygmy and Bantu communities in the area will be able to follow and understand sustainable development news and issues. The radio station will also make regular broadcasts about their way of life and cultural heritage to ensure their traditional knowledge is retained. By communicating among themselves, these communities can share knowledge and traditions. The radio station also aims to facilitate communication that will help preserve the biodiversity they so much depend on. Additionally, the local and indigenous groups will receive information about when the doctor will be travelling through their area and on topics such as HIV/AIDS and other health-related problems.

The project is a first-class example of how governments, NGOs, academics, indigenous peoples and private enterprises can work together to formalise the recognition of indigenous peoples' rights.

Construction of the radio station and purchase of the technical equipment was financed with support from the World Bank and CIB/DLH. Running the radio station is made possible through the generous contributions from 'Fondation Chirac'.





Promoting sustainability

Taking on the challenge of certifying forest areas requires significant financial investment and technical capacity building. The success of such projects depends on the market's recognition of the costs and benefits of buying responsibly produced products. For this reason the promotion of sustainability and the long-term benefits of responsibly produced timber and wood products is an integrated part of DLH's CSR work.

Sharing our vision

Wood is a renewable resource. Responsibly managed forests can not only produce wood indefinitely, but also secure long-term ecological and social benefits. Nonetheless, in many parts of the tropical regions, forests are under increasing pressure from alternative economic activities such as agriculture, urbanisation, soy and palm oil plantations, etc.

DLH is recognised for its role in promoting the sustainable management of tropical forests. Over the course of the year, DLH staff have been invited as guest speakers at conferences,

seminars and other events worldwide to share knowledge and knowhow on sustainable forestry. Our key message is that sustainable forestry can play a vital role in creating long-term economic incentives for preservation of forests as long as the real value of forests is recognised.

Market recognition of FSC products is a direct incentive to encourage certification and sustainable projects around the globe. Unfortunately, the current market price of tropical timber and wood products is still heavily influenced by illegal

DLH: SPONSOR OF THE 2008 FSC DESIGN AWARD

The Danish FSC Design Award ceremony was successfully held for the third consecutive year. Founded by FSC Denmark, the FSC Design Award aims to promote the use of sustainable and responsible timber and wood products to architects and furniture designers. As a sponsor of the event, DLH supplied all the FSC-certified wood used by the designers competing for the award.



logging. This fact, combined with the lack of transparency of products coming from dubious sources, has a negative impact on achieving fair pricing for certified timber. Recognising these challenges, we continue to engage in dialogue with suppliers, customers, politicians, NGOs and other stakeholders to discuss the need for a level playing field that would allow responsible timber and wood products to compete – also on price – with products from dubious or illegal origin.

Sharing knowledge

The proactive pursuit of promotional and marketing activities by all DLH units is important to help create lasting demand for responsible and sustainable timber and wood products. This requires DLH's Environment Department, sales and procurement teams and our buyers to work together closely and share their knowledge.

Six workshops were held in 2008 for procurement and sales staff all over Europe to share knowledge and best practices.

Also in 2008, DLH published a revised version of the 'DLH Group Guide to Certification & Verification'.

Please visit www.dlh-group.com to download the publication.



THE FUTURE OF TROPICAL FORESTS

In connection with our 100-year anniversary, DLH sponsored and co-hosted a seminar together with the University of Copenhagen (LIFE Faculty) in May 2008 under the theme 'The future of the tropical forest'

The objective of the seminar was to facilitate an exchange of ideas about the importance of the world's tropical forests and their future. A wide range of prominent speakers ensured qualified inputs, which were discussed by the roughly 150 participants. Among the speakers were the Danish Minister for Development Cooperation Ulla Tørnæs and Assistant Director for the Food and Agriculture Organization of UN (FAO) Jan Heino.

Lucas Van der Walt, DLH Forest and Environment Manager, held a presentation on DLH's involvement in FSC certification of 1.3 million hectares of tropical forest in Congo-Brazzaville.



Future perspectives

We launched our revised environment policy in 2008 and we will throughout 2009 continue to implement the policy and the development of specific environmental goals for our business units. We will also continue our development and implementation of a corporate social and human rights policy, which together with the environment policy will constitute the DLH group's CSR policy.

Challenging market

In the short term we are facing some very real challenges. The financial situation worldwide has created an extremely difficult market situation characterised by a limited demand for timber and wood products. The slow down of our business activities is having consequences worldwide, and it is difficult to judge precisely how the financial crisis will affect our environmental activities.

The current world economy crisis is not only visible in our core business but is also felt in our CSR activities. We have detected a withdrawal of international donor agencies in some of our regions. Some of the NGO partners in the projects we are involved with depend on donor funding from private, public or institutional sources. The lack of funding may have a negative impact on some of our projects and may slow the progress of others.

The recession makes it very difficult to predict consumer behaviour. In the short term, consumers may well turn to cheaper alternatives, but in the medium and long term, we expect to see a general increase in the environmental awareness of the end-users resulting in preferences for verified and certified products.

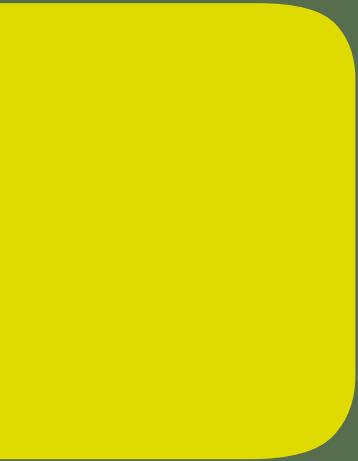
Looking forward

Despite the negative impact of the financial turmoil, we have reason to remain optimistic. Generally, there is a growing trend toward stricter requirements regarding legality of origin - and in some cases also sustainability - of timber and wood products. In most European countries the public procurement policies require some kind of proof of the legal status of timber and wood products.

The EU is working on legislation to ensure the legality of timber and wood products through due diligence processes and third party verification. In the USA, amended legislation on imported products has enforced new and stricter requirements for documentation of imported timber and wood products.

Additionally, the continued financial crisis could spark increased public sector investment. Recent trends calling for tougher requirements in the public procurement policies could lead to an increased demand for verified and certified products.

With our revised environment policy and our continued investment in both sustainable forestry and independent third party verified supplies, we are well positioned to take advantage of opportunities, even in difficult market conditions.



For further information about DLH initiatives in the area of social and environmental responsibility, please consult our website at www.dlh-group.com. If you want further copies of this CSR publication for 2008, or additional information on the activities described, please contact the:

Environment Department
Dalhoff Larsen & Horneman A/S
Skagensgade 66
DK - 2630 Taastrup
CVR nr. 34 41 19 13
Tlf. +45 43 50 01 00
Fax +45 43 50 01 99

www.dlh-group.dk
dlh@dlh-group.com

FSC-SECR-0146
Please visit our website for
information about our FSC
certificates